

GAS-COOKERS



T5 household gas cooker with 4 cooking burners

T5 Lux household gas cooker with 4 cooking burners (with glass cook-top)



The reliable heat

Perforated (11) cover



euro GF40.10 F and euro GF40.10 P, euro GF40.11 F and euro GF40.11 P gas fired room heaters

Appliance versions with closed combustion chamber "F" (balanced flue) and connectable to chimney "P".

Cast iron heat exchanger plate

Task:

Area of application:

Type of ignition:

Type of flame safety device:

Type of power control:

Combustion gas outlet:

Cover:

Control:

direct heating of premises

flats, dwelling- and side rooms, shops, offices; etc.

piezoelectric

thermoelectric

combined room temperature control

closed combustion chamber "F" (balanced flue) type or connectable to chimney "P"

painted steel sheet

appliance with 10 cover: crown cover with front control,

appliance with 11 cover: perforated with top control

Major characteristic data:

- quality corresponding to European standards
- very good efficiency
- built-in room temperature thermostat
- **the chimney version is equipped with combustion product discharge safety device which turns off the appliance in case of abnormal draught**
- low harmful material discharge (NO_x, CO)
- requirements for the room air's quality are met in the room of installation and the adjacent room as well
- alterable for LPG by changing the gas nozzle.
- operation of appliances requires no electricity.
- appliances out of operation there is not any risk of frost.



The reliable *heat*

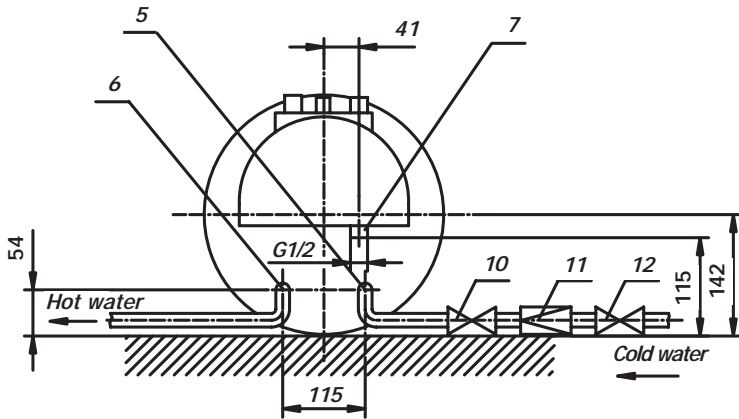
Performance and set values

Type of gas		Natural gas	LPG
Calorimetric value of the gas (kWh/m ³)		9,4	32,2
Rated heat loading (kW)		4,3	4,4
Efficiency at rated load F type (%)		91	91
Efficiency at rated load P type (%)		87	85
Connection pressure (mbar)		25	30
Rated gas load at temperature of 15°C	(m ³ /h) (kg/h)	0,46 -	0,137 0,367
Reduced gas load at temperature of 15°C	(m ³ /h) (kg/h)	0,2 -	0,06 0,16
Type of combined gas valve		CR 640	CR 640
NO _x class (best: 5, acceptable: 1)		5	5

The given technical data are informative. Valid facts can be found in the instruction of installation of appliances.

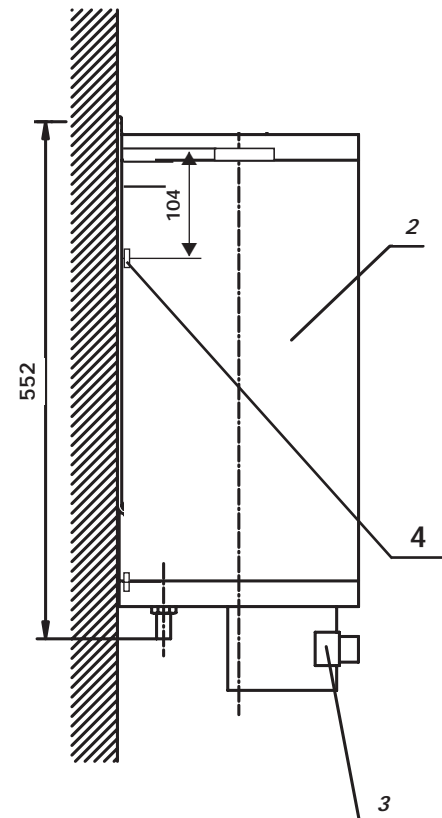
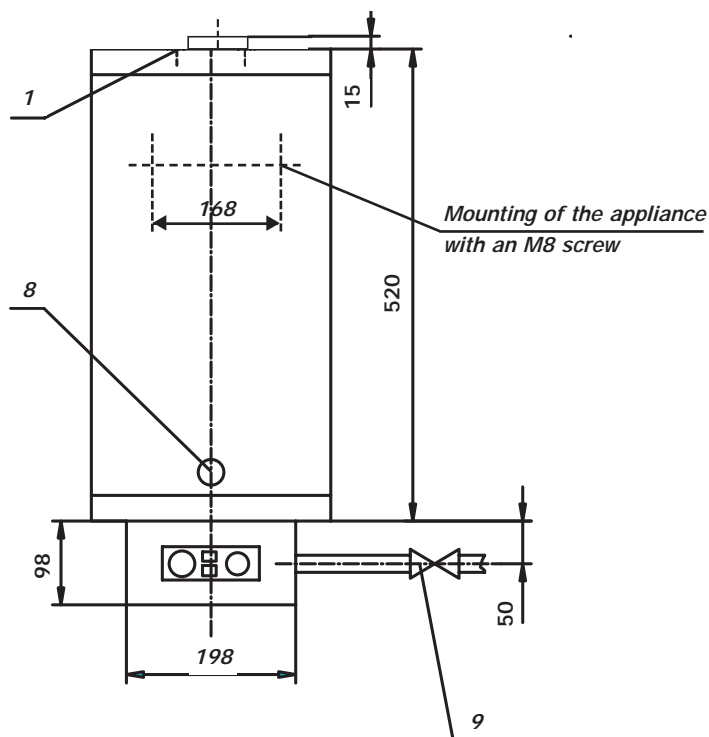
For natural gas and LPG

Dimensions and connection of the appliance:



Legend:

1. Combustion gas outlet,
2. Enamelled, insulated water tank,
3. CR6 automatic gas valve,
4. Appliance support
5. Cold water connection 3/8",
6. Hot water connection 3/8",
7. Gas connection neck R 1/2",
8. Eyehole,
9. Gas master cock,
10. BSz-6 safety water valve,
11. Pressure reducing valve (for water),
12. Cold water closing valve



Dimensions of the appliance, technical data

Type	H euro H12
Height of the appliance (mm)	635
Outer diameter of the appliance Ø (mm)	280
Weight without water (kg)	15,5
Gas connection	G 1/2"
Cold water connection	3,8"
Hot water connection	3,8"

BEÁTA 2, 3, 4 AND 5.1 GAS FIRED ROOM HEATERS WITH CLOSED COMBUSTION CHAMBER (BALANCED FLUE)

Appliance versions exclusively with closed combustion chamber (balanced flue).

Enamelled steel heat exchanger plate

Task:	direct heating of premises
Area of application:	flats, dwelling- and side rooms, shops, offices; etc.
Type of ignition:	piezoelectric
Type of flame safety device:	thermoelectric
Type of power control:	combined temperature control
Combustion gas outlet:	closed combustion chamber (balanced flue)
Control:	on the front control

Major characteristic data:

- quality corresponding to European standards
- very good efficiency
- built-in room temperature control
- low harmful material discharge (NOx, CO)
- requirements for the room air's quality are met in the room of installation and the adjacent room as well
- alterable for LPG by changing the gas nozzle.
- operation of appliances requires no electricity.
- appliances out of operation there is not any risk of frost.



The reliable heat

Performance and set values

Type of gas		Natural gas	LPG
BEÁTA 2	NOx class	5	5
	Calorimetric value of the gas (kWh/m ³)	9,4	32,2
	Connection pressure (mbar)	25	30
	Rated heat loading (kW)	2,2	2,45
	Efficiency at rated load (%)	92	89
	Rated gas load (m ³ /h)	0,2288	0,076
	at temperature of 15°C (kg/h)	-	0,204
BEÁTA 3	NOx class	5	5
	Calorimetric value of the gas (kWh/m ³)	9,4	32,2
	Connection pressure (mbar)	25	30
	Rated heat loading (kW)	3,3	3,5
	Efficiency at rated load (%)	91	88
	Rated gas load (m ³ /h)	0,35	0,111
	at temperature of 15°C (kg/h)	-	0,297
BEÁTA 4	NOx class	4	5
	Calorimetric value of the gas (kWh/m ³)	9,4	32,2
	Connection pressure (mbar)	25	30
	Rated heat loading (kW)	4,5	4,8
	Efficiency at rated load (%)	89	87
	Rated gas load (m ³ /h)	0,4736	0,148
	at temperature of 15°C (kg/h)	-	0,397
BEÁTA 5.1	NOx class	4	5
	Calorimetric value of the gas (kWh/m ³)	9,4	32,2
	Connection pressure (mbar)	25	30
	Rated heat loading (kW)	5,6	5,4
	Efficiency at rated load (%)	85	84
	Rated gas load (m ³ /h)	0,59	0,168
	at temperature of 15°C (kg/h)	-	0,45

The given technical data are informative. Valid facts can be found in the instruction of installation of appliances.



euro Fk 25 chimney connectable wall mounted heating appliance

With enamelled steel heat exchanger plate

- Task:** direct heating of premises
- Area of application:** flats, dwelling- and side rooms, shops, offices; etc.
- Type of ignition:** piezoelectric
- Type of flame safety device:** thermoelectric
- Type of power control:** combined temperature control
- Combustion gas outlet:** connectable to chimney "P"
- Control:** on the front control
- Combustion gas outlet:** on the top or on the rear of the appliance
- Major characteristic data:**
- quality corresponding to European standards
 - very good efficiency
 - built-in room temperature control
 - low harmful material discharge (NO_x, CO)
 - requirements for the room air's quality are met in the room of installation and the adjacent room as well
 - alterable for LPG by changing the gas nozzle.
 - operation of appliances requires no electricity.
 - appliances out of operation there is not any risk of frost.



The reliable heat

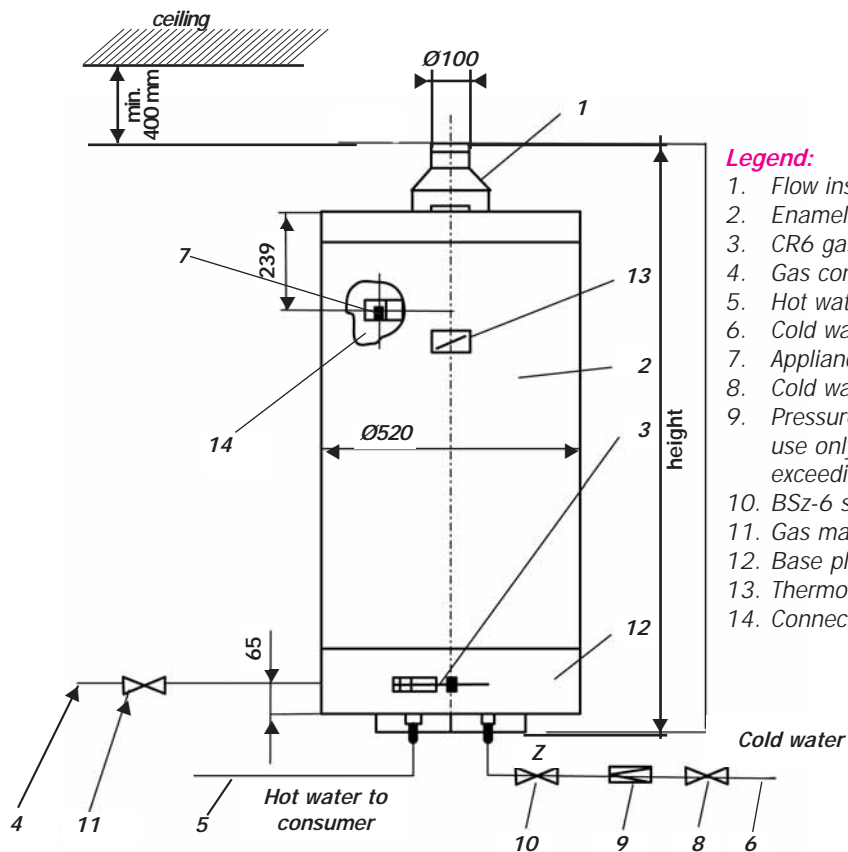
Performance and set values

Type of gas		Natural gas	LPG
Calorimetric value of the gas (kWh/m ³)		9,4	32,2
Connection pressure (mbar)		25	30
Rated heat loading (kW)		3,0	3,0
NOX class (best: 5, acceptable: 1) "F" type		5	5
Efficiency at rated load (%)		90	90
Reduced gas load at temperature of 15°C	(m ³ /h) (kg/h)	0,32 -	0,094 0,25
Reduced gas load at temperature of 15°C	(m ³ /h) (kg/h)	0,16 -	0,046 0,12
Nominal diameter of combustion product exhaust-pipe of the appliance: 60 mm			

The given technical data are informative. Valid facts can be found in the instruction of insallation of appliances.

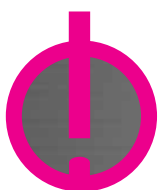
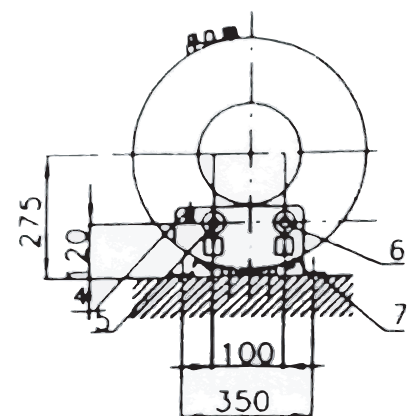
For natural gas and LPG

Dimensions and connection of the appliance:



Legend:

1. Flow insurance of combustion gas,
2. Enamelled, insulated water tank,
3. CR6 gas valve,
4. Gas connection neck 1/2",
5. Hot water connection 1/2",
6. Cold water connection 1/2",
7. Appliance support,
8. Cold water closing cock (ball valve),
9. Pressure reducing valve (necessary to use only in case of supply pressures exceeding 5 bar),
10. BSz-6 safety valve,
11. Gas master cock,
12. Base plate,
13. Thermometer,
14. Connection to circulation



ATTENTION! In case of KN type appliances the oxyprotector of the appliance shall be at least 400 mm from the ceiling.

Dimensions of the appliance, technical data

Type	HT80	HT120	HT150
Height of the appliance (mm)	1005	1280	1550
Outer diameter of the appliance (Ø mm)	520	520	520
Weight without water (kg)	52	65	78
Water capacity (litre)	80	120	150
Combustion gas outlet pipe (Ø mm)	100	100	100
Gas connection	G 1/2"	G 1/2"	G 1/2"
Cold water pipe, hot water pipe	G 1/2"	G 1/2"	G 1/2"

GAS WATER STORAGE HEATERS



HT80 K, HT120 K, HT150 K, HT80 KN, HT120 KN, HT150 KN
euro H12



*The reliable **heat***

Gas fired water storage heaters



HT80 K, HT120 K, HT150 K connectable to chimney, wall mounted, HT80 KN, HT120 KN, HT150 KN, flue less, wall mounted

Task:

Area of application:

Type of ignition:

Type of flame safety device:

Type of power control:

Combustion gas outlet:

Air-space protection:

production of household hot water, households, kitchens, communal buildings

piezoelectric

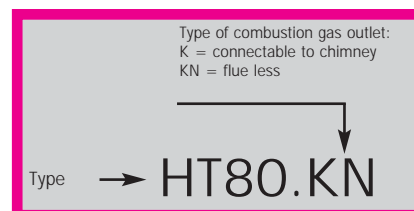
thermoelectric

automatics type CR6 between 35-75°C

to chimney or without outlet

by installed oxyprotector, which automatically shuts down the appliance in case of the concentration of combustion gas well lower than the dangerous level. The appliance can be restarted after ventilating the room. In case of appliance connected to the chimney, the oxyprotector provides protection against the dangerous amount of combustion gases flowing back to the room.

- Mg-anode protected enamelled storage tank,
- water temperature display on the cover,
- fast warm-up time, easy control,
- polyurethane foam insulation,
- the appliance is exclusively wall mountable



The reliable heat

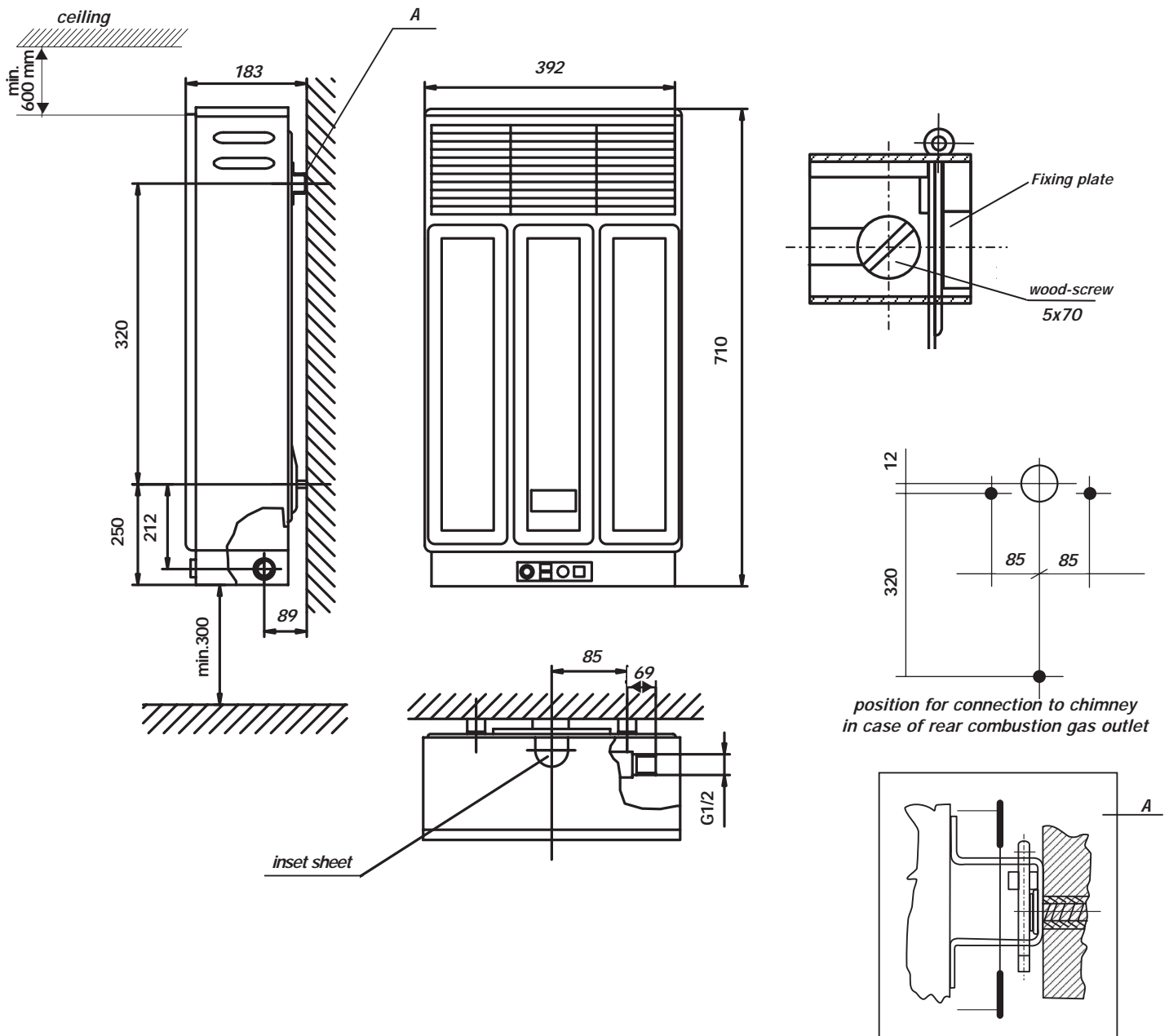
Performance and set values

Type	with chimney				flue less	
	HT80 K		HT120 K, HT150 K		HT80KN, HT120KN, HT150KN	
Type of gas	Natural gas	LPG	Natural gas	LPG	Natural gas	LPG
Calorimetric value of the gas kWh/m ³	9,45	32,2	9,45	32,2	9,45	32,2
Connection pressure mbar	25	30	25	30	25	30
Rated heat loading kW	5,0	4,8	5,5	5,5	2,0	2,0
Efficiency at rated load %	85	86	87/85	88/85	90	90
Rated gas load at temp. of 15°C	m ³ /h		0,53	0,15	0,21	0,062
	kg/h		0,4		0,167	
Maximal water pressure bar	6	6	6	6	6	6

The given technical data are informative. Valid facts can be found in the instruction of insallation of appliances.

For natural gas and LPG

Dimensions and connection of the appliance:



Dimensions of the appliance, technical data

Height (mm)	710
Width (mm)	392
Depth (mm)	183
Weight (kg)	16
Gas connection	G 1/2"
Nominal diameter of combustion product exhaust-pipe of the appliance	60 mm

WALL MOUNTED HEATING APPLIANCE



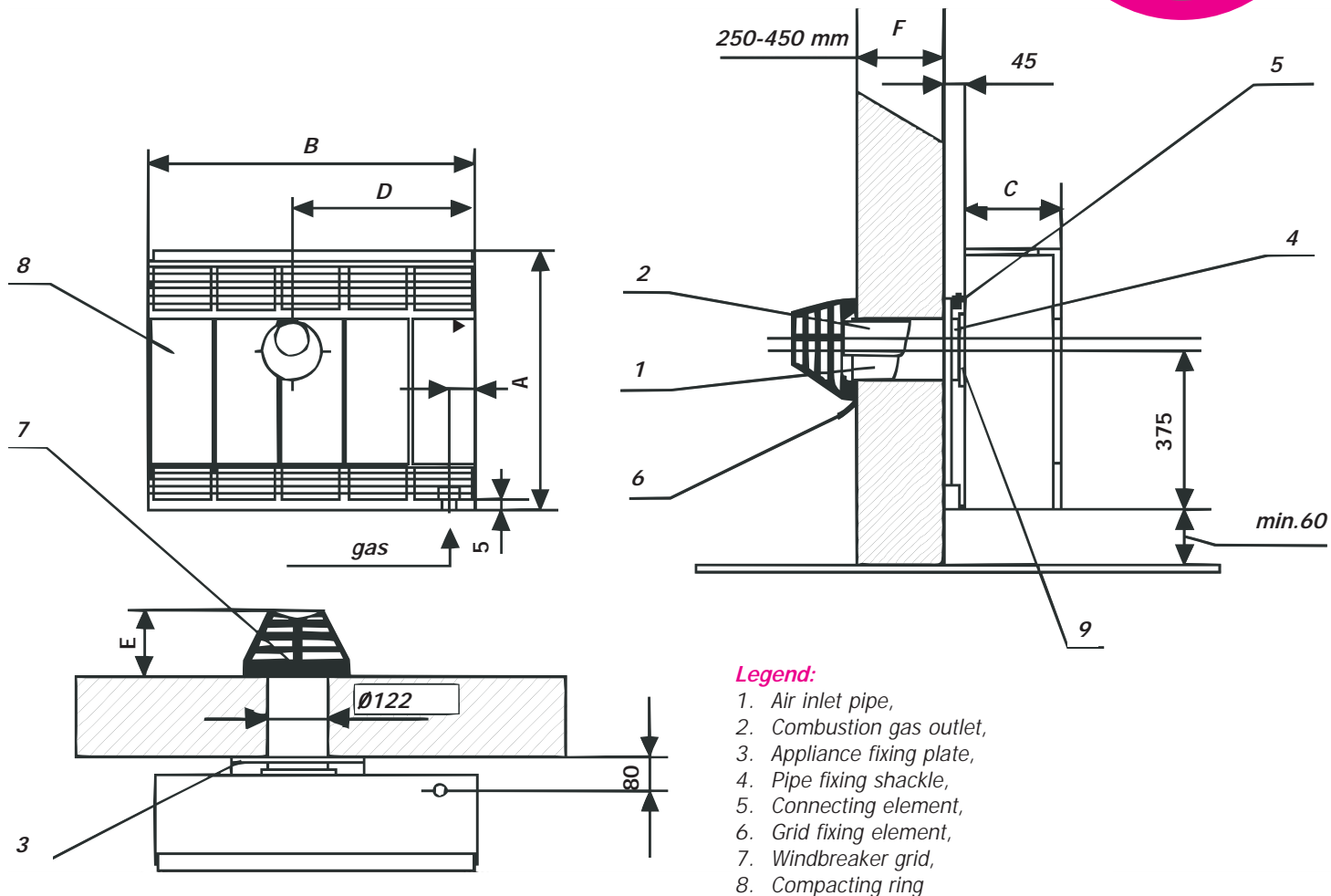
euro Fk 25 chimney connectable wall mounted heating appliance



The reliable heat

For natural gas and LPG

Dimensions and connection of the appliance:



Dimensions of the appliance, technical data

Type		BEÁTA 2	BEÁTA 3	BEÁTA 4	BEÁTA 5.1
Construction		Closed combustion chamber (balanced flue)			
Height (mm)	A	600	600	600	600
Width (mm)	B	416	543	670	808
Depth (mm)	C	215	215	215	215
Weight (kg)		15	19	23	30
Gas connection		G 1/2"	G 1/2"	G 1/2"	G 1/2"
D		267	332	319.5	446
E		105	105	105	105
F		240-450	240-450	240-450	240-450

The given technical data are informative. Valid facts can be found in the instruction of installation of appliances.

H 12 type water storage heater, flue less, wall mounted, with bottom water connection



Task:	production of household hot water
Area of application:	households dish washing basins
Type of ignition:	piezoelectric
Type of flame safety device:	thermoelectric
Type of power control:	automatics type CR6
Combustion gas outlet:	by natural ventilation
Air-space protection:	by installed oxyprotector, which automatically shuts down the appliance in case of the concentration of combustion gas well lower than the dangerous level. The appliance can be restarted after ventilating the room

Major characteristic data:

- due to its small space demand it can be installed in kitchens and offices.
- manufactured only flue less, in wall mounted version
- the cold water entering the water storage tank is heated up to the required temperature within a half an hour.
- the appliance can be connected in closed and opened water system (up to 6 bar).



The reliable heat

Performance and technical data

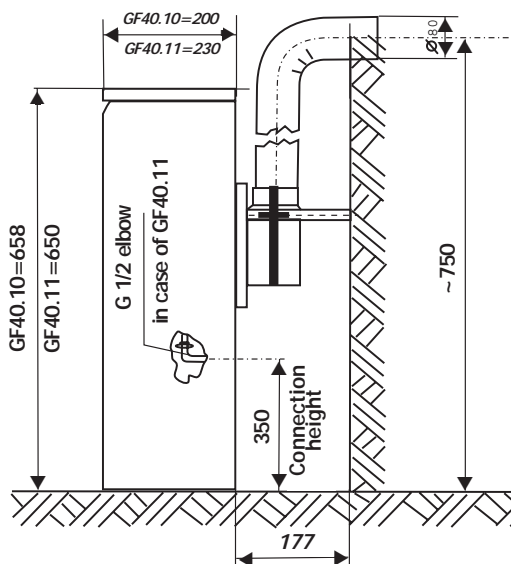
Type of gas	Natural gas	LPG
Calorimetric value of the gas (kWh/Nm ³)	9,45	32,2
Connection gas pressure (mbar)	25	30
Rated heat loading (kW)	1,7	1,7
Efficiency at rated load (%)	88	88
Rated gas load 15°C-on (m ³ /h)	0,21	0,06
CR 6 combined gas valve (for water)		
Temperature range of the temperature controller	35-75°C	35-75°C
Safety switch-off temperature	<100°C	<100°C
Temp. difference between the adjacent controlling action	6°C	6°C

The given technical data are informative. Valid facts can be found in the instruction of insallation of appliances.

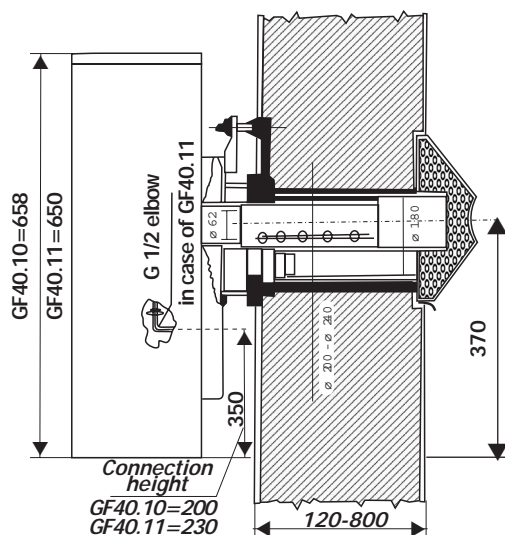
For natural gas and LPG

Dimensions and connection of the appliance:

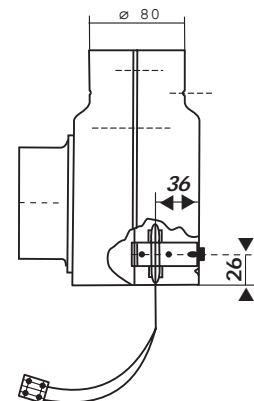
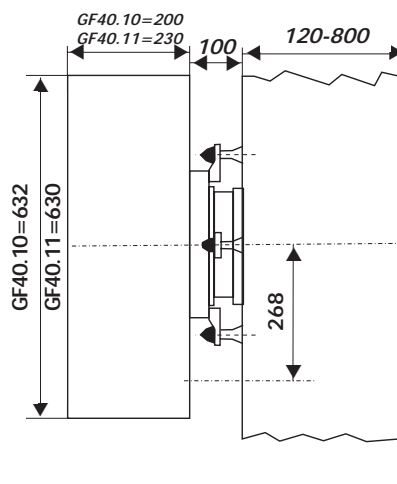
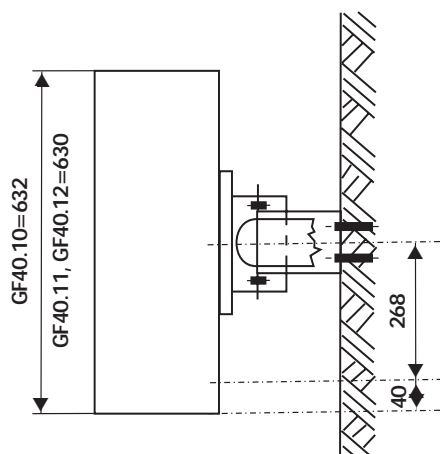
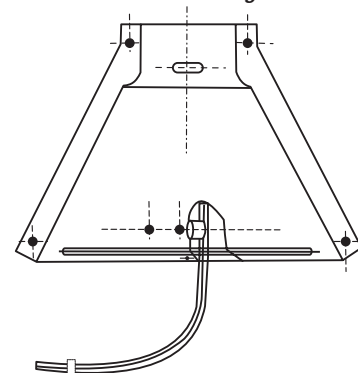
Appliance connectable to chimney "P"



Appliance with closed combustion chamber "F" (balanced flue)



Installation of combustion product back-flow detector into the deflecting unit



Dimensions of the appliance, technical data

Type	euro GF40.10 F euro GF40.10 P	euro GF40.11 F euro GF40.11 P
Height (mm)	658	650
Width (mm)	632	630
Depth F type (mm)	315	325
Depth P type (mm)	375	385
Weight (kg)	44	44
Gas connection	G 1/2"	G 1/2"
Nominal diameter of combustion product exhaust-pipe of the appliance connectable to chimney: 76 mm		